

Directions (1-5): Answer the questions based on the information given below.

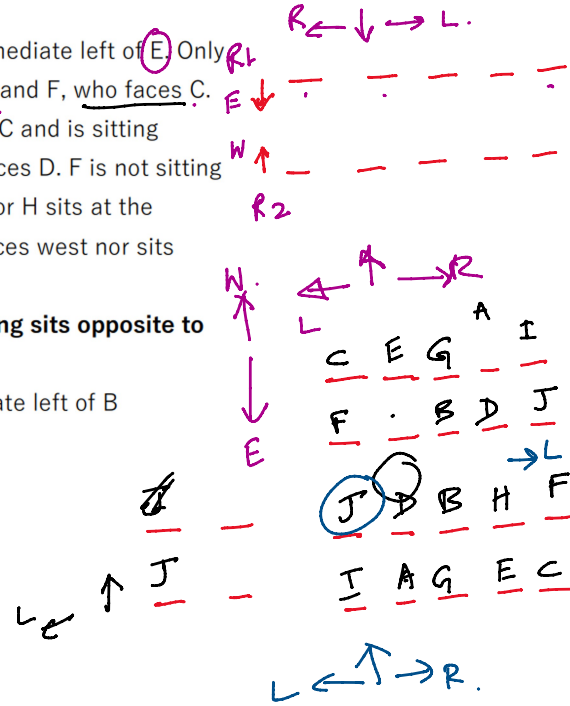
Ten people A, B, C, D, E, F, G, H, I and J are seated in two parallel rows such that five persons are seated in each row but not necessarily in the same order. Persons seated in row 1 are facing towards the east direction while persons seated in the row 2 are facing towards the west direction. Therefore, in the given seating arrangement persons seating in row 1 are facing and sitting opposite to the persons seating in row 2 and vice versa.

J sits at one of the extreme ends and sits three places away from the one who faces E. B faces

the one who sits to the immediate left of E. Only one person sits between B and F, who faces C. G sits second to the left of C and is sitting adjacent to the one who faces D. F is not sitting adjacent to D. Neither A nor H sits at the extreme ends. H neither faces west nor sits adjacent to G.

1) Who among the following sits opposite to A?

- A. Person who sits immediate left of B
- B. D
- C. E
- D. Person who faces C
- E. Either F or J



2) Who sits 2nd to the left of G?

- A. Person who sits opposite to D
- B. A
- C. The one who faces B
- D. J
- E. None of the above

3) Who sits immediate left of H?

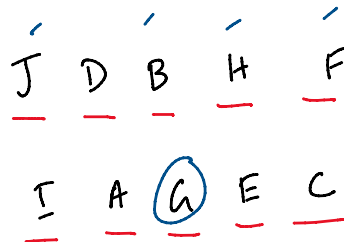
- A. C
- B. I
- C. B
- D. F
- E. None of the above

4) Who sits exactly between the one who faces B and the one who faces J?

- A. The one who faces D
- B. C
- C. Can't be determined
- D. G
- E. The one who sits immediate left of I

5) Four of the following five are related to each other in some way and thus formed a group. Choose the one which does not belong to that group?

- A. F
- B. H
- C. G
- D. B
- E. J



Directions (6-10): Study the following information carefully and answer the below questions

Twelve persons are sitting in a parallel row and opposite to each other. In row1- L, M, N, O, P, and Q face the south. In row2- A, B, C, D, E and F face the north but not necessarily in the same order.

L sits opposite to the one who sits second to the left of F. Only two persons sit between B and F. B sits to the left of F. The number of persons sits to the left of L is the same as the number of persons sit to the right of P. N sits second to the right of P. A sits immediate left of D, none of them sits at end of the row. C sits opposite to the one who sits second to the left of Q. O and P are not immediate neighbours.

6) What is the position of Q with respect to L?

- a) Immediate left
- b) Immediate right
- c) Second to the right
- d) Third to the left
- e) Second to the left

7) Who among the following pair of persons are sitting opposite to each other?

- I. OB
- II. PE
- III. LD
- IV. MF

- a) Only II and III
- b) Only I and II
- c) Only III and IV
- d) Only I and III
- e) All I, II, III and IV

8) If all the persons in row 1 are arranged in alphabetical order from the right end, then who among the following person sits opposite to D?

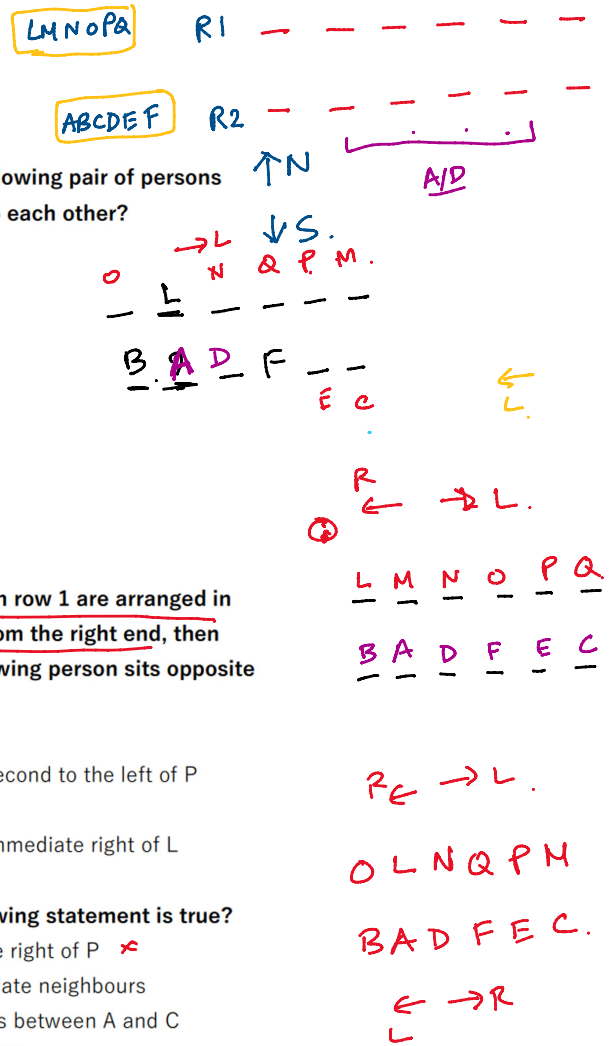
- a) Q
- b) The one who sits second to the left of P
- c) P
- d) The one who sits immediate right of L
- e) N

9) Which of the following statement is true?

- a) Q sits second to the right of P
- b) L and N are immediate neighbours
- c) Only one person sits between A and C
- d) B sits to the right of E
- e) P sits opposite to F

10) How many persons sit to the right of M?

- a) As many persons sit between B and C
- b) Three
- c) Five
- d) One
- e) As many persons sit to the left of D



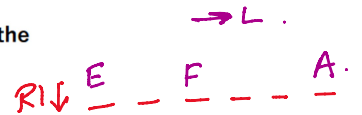
Directions (11-15): Study the following information carefully and answer the below questions.

Twelve students are seated on the school ground opposite each other. In row1, A, B, C, D, E, and F are facing south. In row2- U, V, W, X, Y and Z are facing north. All the information is not necessarily in the same order.

E sits opposite to the one who sits third to the left of X. Either E or X are sitting at the end of the row. Only one person sits between E and F. The number of persons sitting to the left of F is the same as to the right of Z. Only two persons are sitting between Z and the one who sits opposite to A. The number of persons who sits between A and F is the same as between Y and U. Y and Z are not immediate neighbours. W sits to the right of V and does not face A. C sits to the left of D and to the right of B.

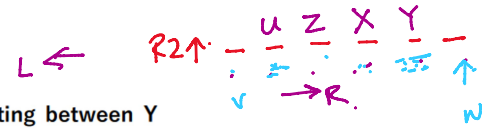
11) Who among the following person faces the one who sits immediate left of C?

- A. The one who sits second to the right of X
- B. The one who sits immediate left of V
- C. Z
- D. W
- E. U

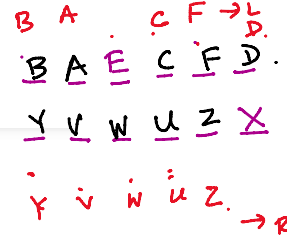


12) How many persons are sitting between Y and the one who faces F?

- A. None
- B. Four



- C. Two
- D. One
- E. Three



13) Four of the five among the following are similar in such a way to form a group, which one of the following doesn't belong to the group?

- A. YW
- B. UX
- C. DE
- D. CB
- E. AF

14) If all the persons are arranged alphabetical order in Row 2, from the left end to the right end, then how many persons remain unchanged from their previous position?

- A. None
- B. Two
- C. One
- D. Three
- E. Four

15) Who sits adjacent to F?

- I) The one who faces X
- II) The one who faces U
- III) The one who faces V

- A. Only (I) and (II)
- B. Only (II) and (III)
- C. Only (III)
- D. Only (II)
- E. Only (I) and (III)